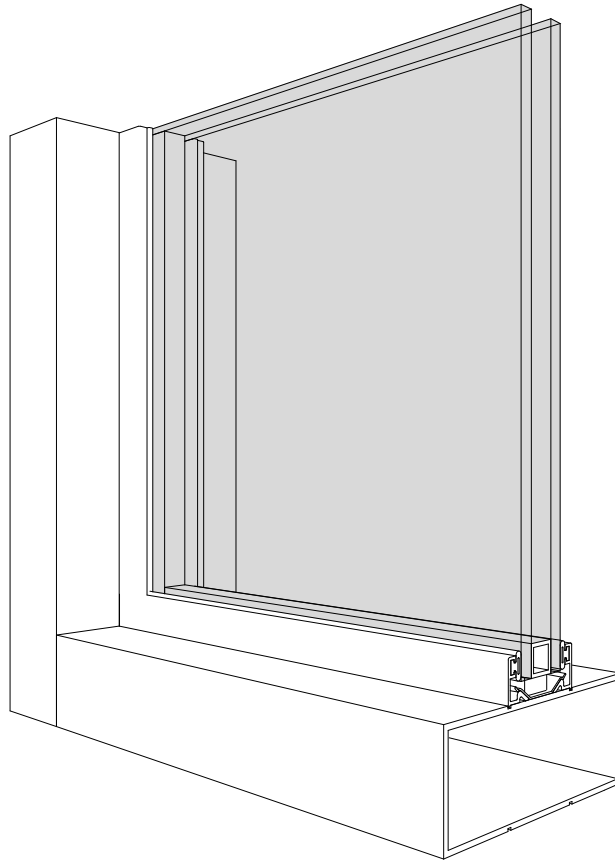


# 450 SERIES



## KEY FEATURES

- $1\frac{3}{4}'' \times 4\frac{1}{2}''$  profile
- Screw-applied stops
- Compatible with Windspec doors
- Single or double glazed



**WINDSPEC** INC.

MANUFACTURERS OF HIGH PERFORMANCE 'WINDSPEC' WINDOWS  
ALUMINUM ENTRANCE SYSTEMS AND ARCHITECTURAL PANELS  
1310 CREDITSTONE RD, CONCORD, ONTARIO L4K 5T7  
Telephone (905) 738 -8311 Fax (905) 738 - 6188

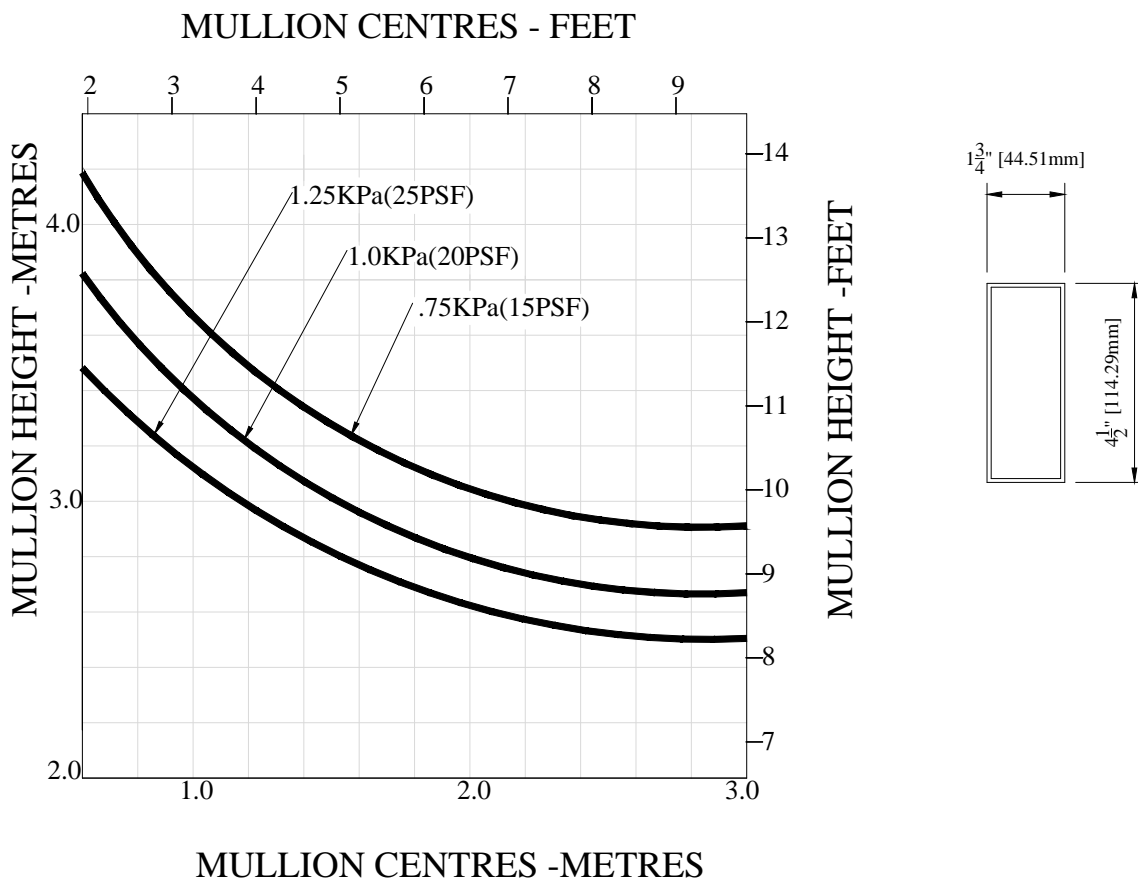
JANUARY 2015

# 450 SERIES

## DESCRIPTION AND WINDLOAD CHARTS

This entrance framing system functions in the same way as does Series 400. The product allows for the application of glazing stops for single or sealed unit glazing.

The series 450 sections being of heavier wall thickness than that of Series 400, allows for frame size openings to be larger than the Series 400 application

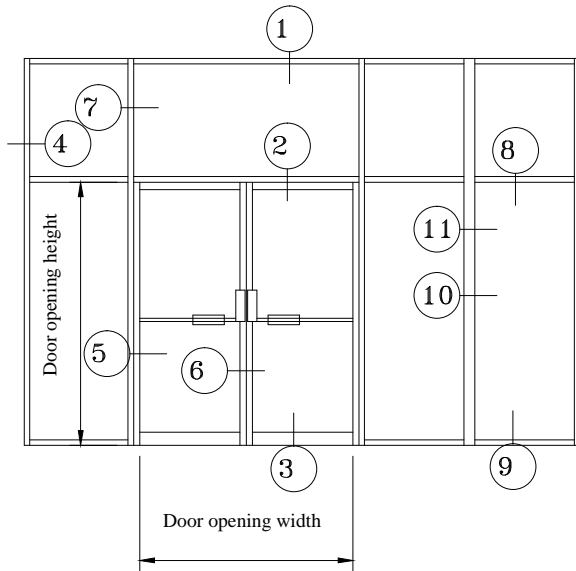


MANUFACTURERS OF HIGH PERFORMANCE WINDSPEC WINDOWS  
ALUMINUM ENTRANCE SYSTEMS AND ARCHITECTURAL PANELS  
1310 CREDITSTONE RD, CONCORD, ONTARIO L4K 5T7  
Telephone (905) 738-8311 Fax (905) 738-6188

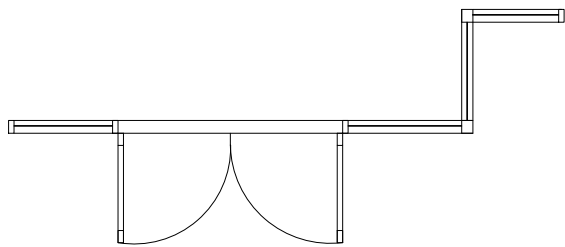
JANUARY 2015

# 450 SERIES

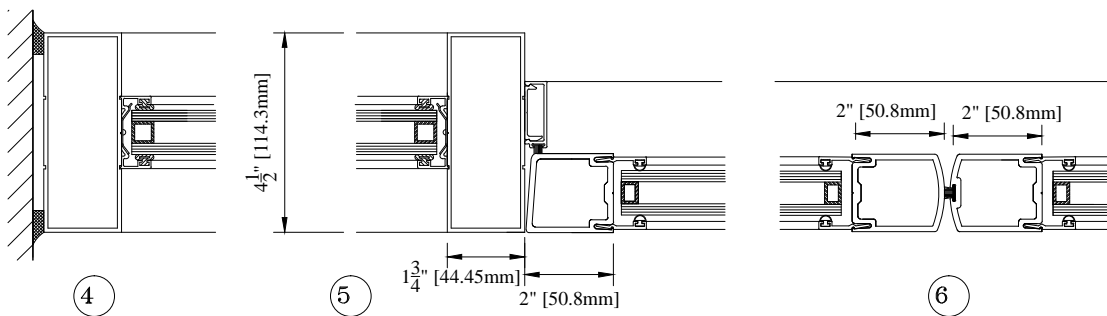
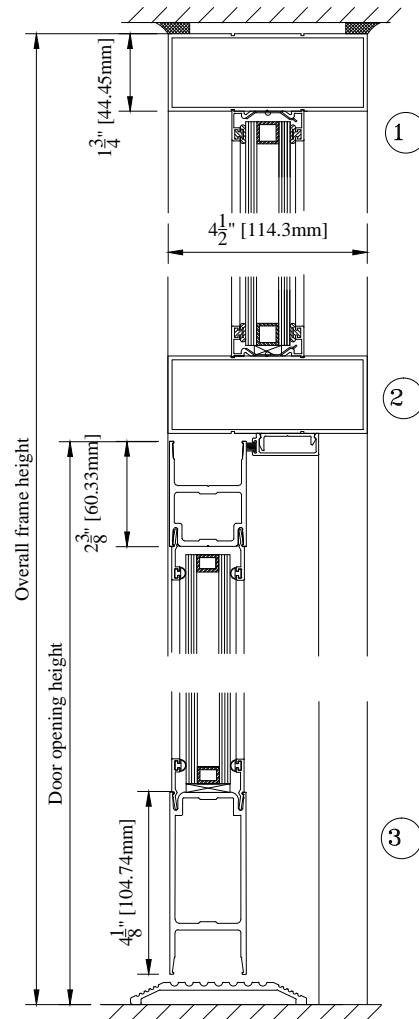
## TYPICAL DETAILS



ELEVATION



PLAN

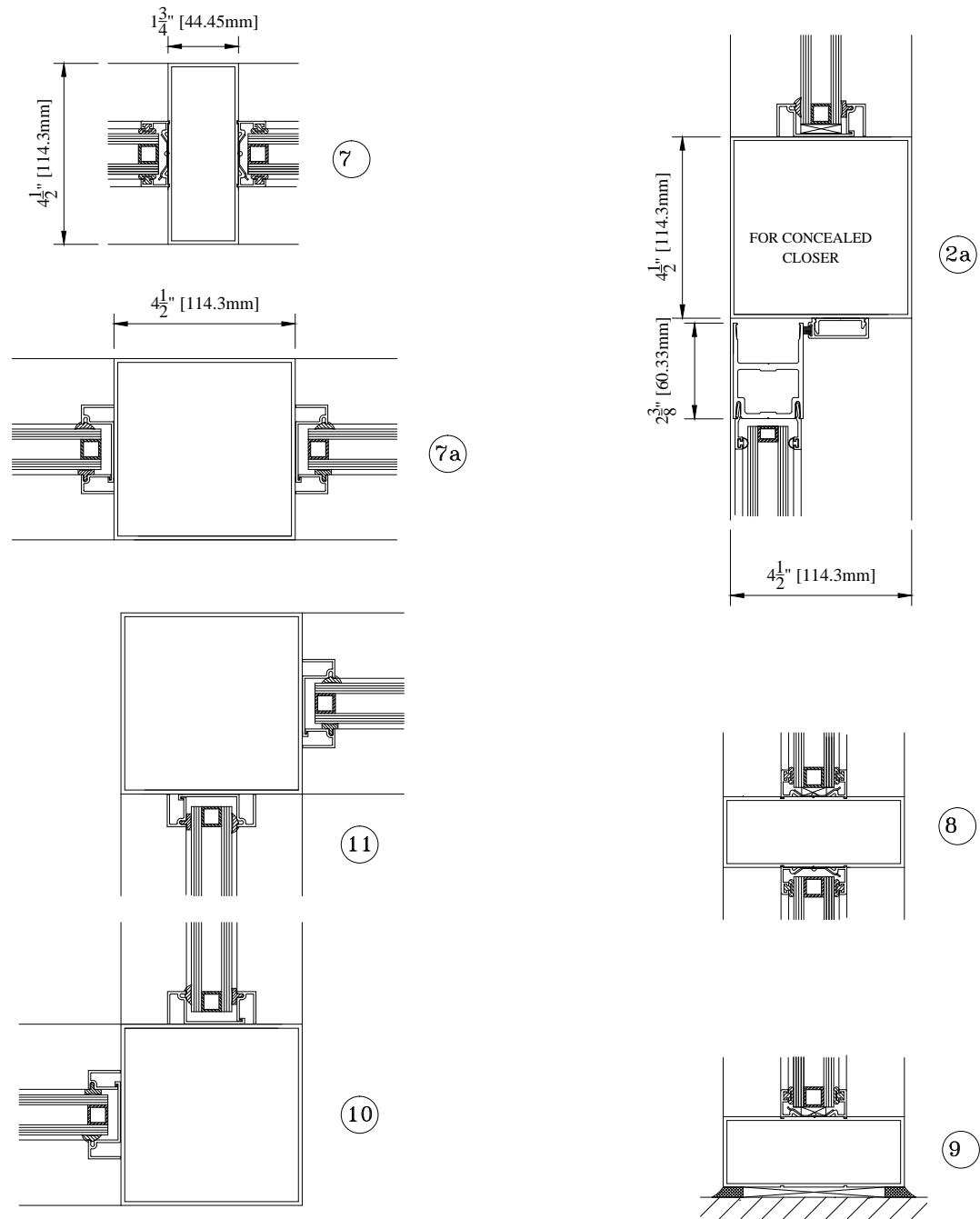


**WINDSPEC** INC.  
 MANUFACTURERS OF HIGH PERFORMANCE 'WINDSPEC' WINDOWS  
 ALUMINUM ENTRANCE SYSTEMS AND ARCHITECTURAL PANELS  
 1310 CREDITSTONE RD, CONCORD, ONTARIO L4K 5T7  
 Telephone (905) 738-8311 Fax (905) 738-6188

JANUARY 2015

# 450 SERIES

## TYPICAL DETAILS









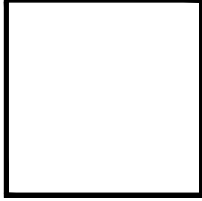


**WINDSPEC** INC.  
MANUFACTURERS OF HIGH PERFORMANCE 'WINDSPEC' WINDOWS  
ALUMINUM ENTRANCE SYSTEMS AND ARCHITECTURAL PANELS  
1310 CREDITSTONE RD, CONCORD, ONTARIO L4K 5T7  
Telephone (905) 738-8311 Fax (905) 738-6188

JANUARY 2015

# 450 SERIES

## PARTS LIST

Part Number	Description	Profile
C-45001	1 $\frac{3}{4}$ " x 4 $\frac{1}{2}$ " grooved frame	 N.T.S.
C-45002	1 $\frac{3}{4}$ " x 4 $\frac{1}{2}$ " plain tube	 N.T.S.
C-45015	1 $\frac{3}{4}$ " x 6" plain tube	 N.T.S.
C-45003	snap-on stops for $\frac{1}{4}$ " glazing	 N.T.S.
C-45004	snap-on stops for 1" glazing	 N.T.S.
C-45010	door stop base	 N.T.S.
C-45012	$\frac{1}{2}$ " door stop cover	 N.T.S.
C-45013	$\frac{5}{8}$ " door stop cover	 N.T.S.
C-45016	4 $\frac{1}{2}$ " x 4 $\frac{1}{2}$ " square corner post	 N.T.S.



**WINDSPEC** INC.  
 MANUFACTURERS OF HIGH PERFORMANCE 'WINDSPEC' WINDOWS  
 ALUMINUM ENTRANCE SYSTEMS AND ARCHITECTURAL PANELS  
 1310 CREDITSTONE RD, CONCORD, ONTARIO L4K 5T7  
 Telephone (905) 738-8311 Fax (905) 738-6188

JANUARY 2015