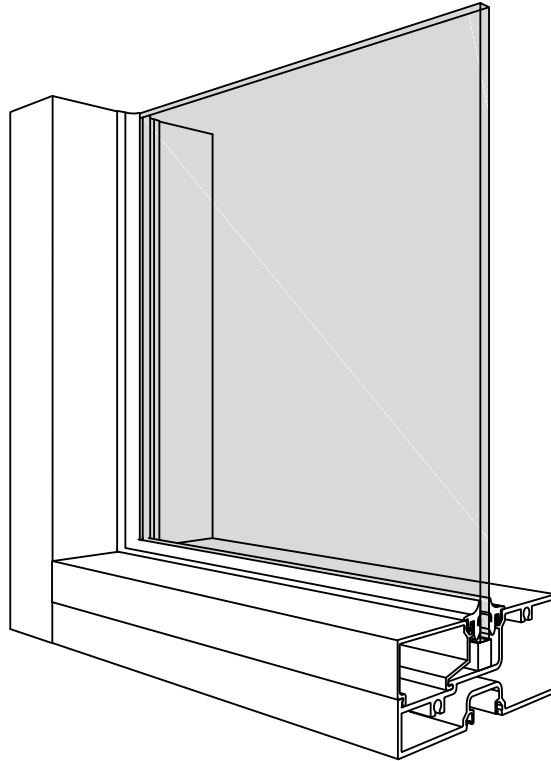


630 SERIES



KEY FEATURES

- Interior flush glaze
- Non-thermally broken
- 1 $\frac{3}{4}$ " x 4 $\frac{1}{2}$ " profile
- Exterior glazed
- 6mm ($\frac{1}{4}$ ") and 10mm ($\frac{3}{8}$ ") glazing thickness
- Compatible with Windspec doors



WINDSPEC INC.

MANUFACTURERS OF HIGH PERFORMANCE 'WINDSPEC' WINDOWS
ALUMINUM ENTRANCE SYSTEMS AND ARCHITECTURAL PANELS
1310 CREDITSTONE RD, CONCORD, ONTARIO L4K 5T7
Telephone (905) 738 -8311 Fax (905) 738 - 6188

FEBRUARY 2017

630 SERIES

TABLE OF CONTENTS

TYPICAL & DOOR DETAILS _____	003
WIND LOAD CHARTS _____	008
PARTS LIST _____	009



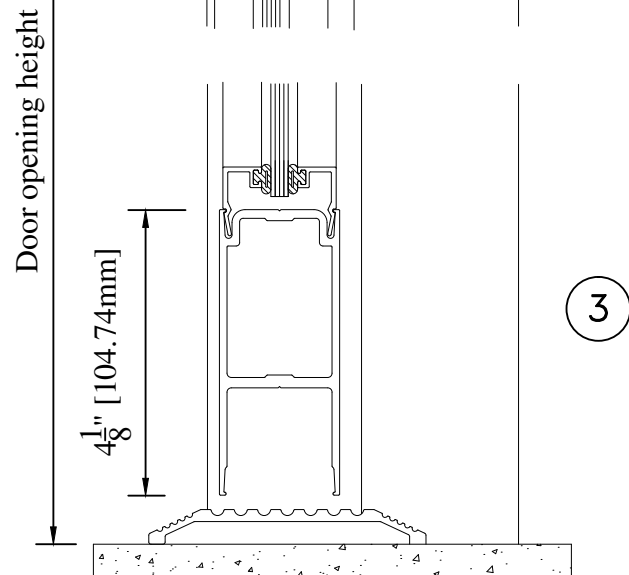
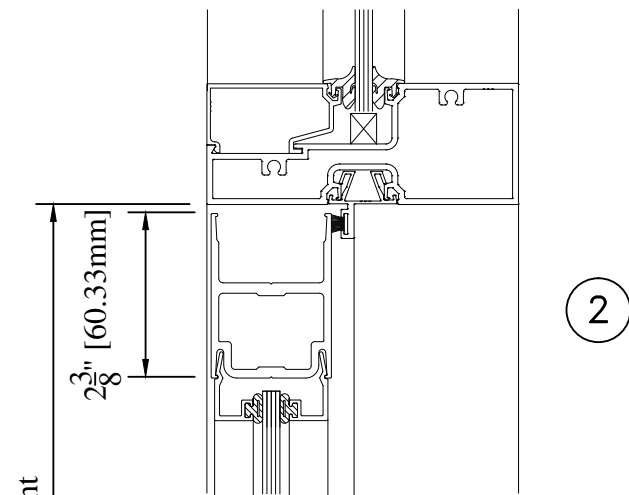
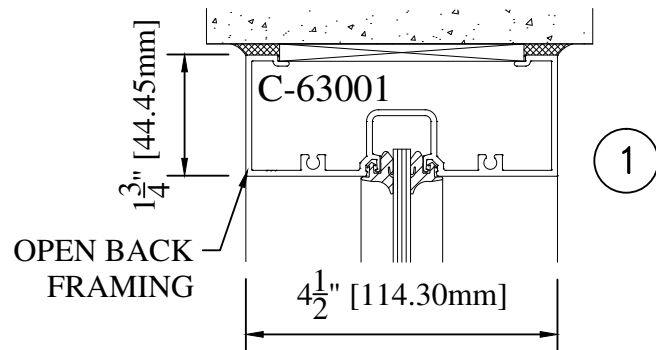
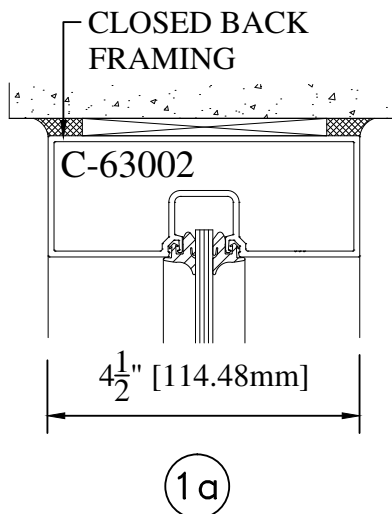
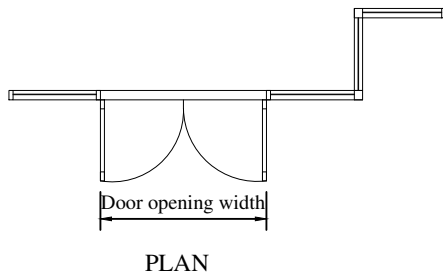
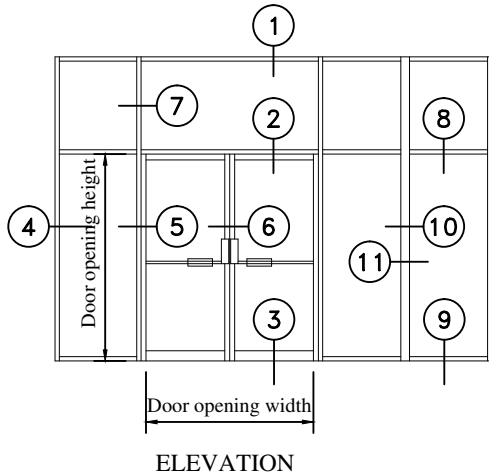
WINDSPEC INC.

MANUFACTURERS OF HIGH PERFORMANCE 'WINDSPEC' WINDOWS
ALUMINUM ENTRANCE SYSTEMS AND ARCHITECTURAL PANELS
1310 CREDITSTONE RD, CONCORD, ONTARIO L4K 5T7
Telephone (905) 738 -8311 Fax (905) 738 - 6188

FEBRUARY 2017

630 SERIES

TYPICAL & DOOR DETAILS



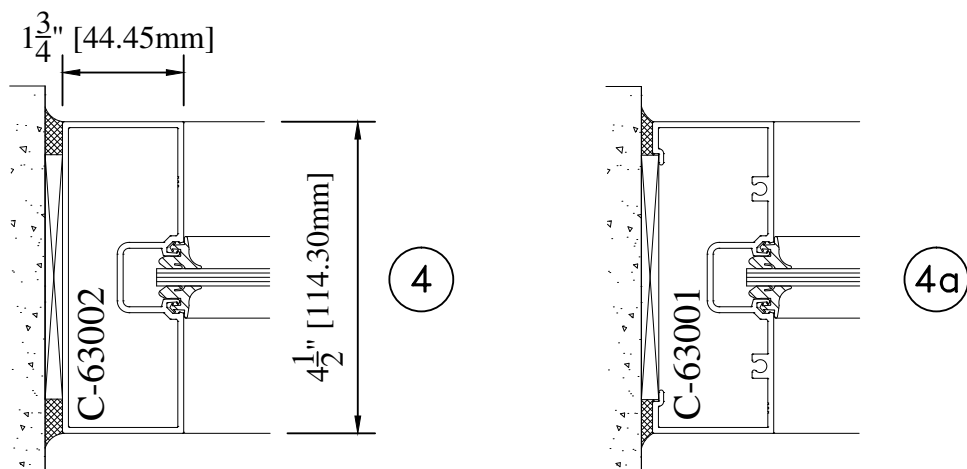
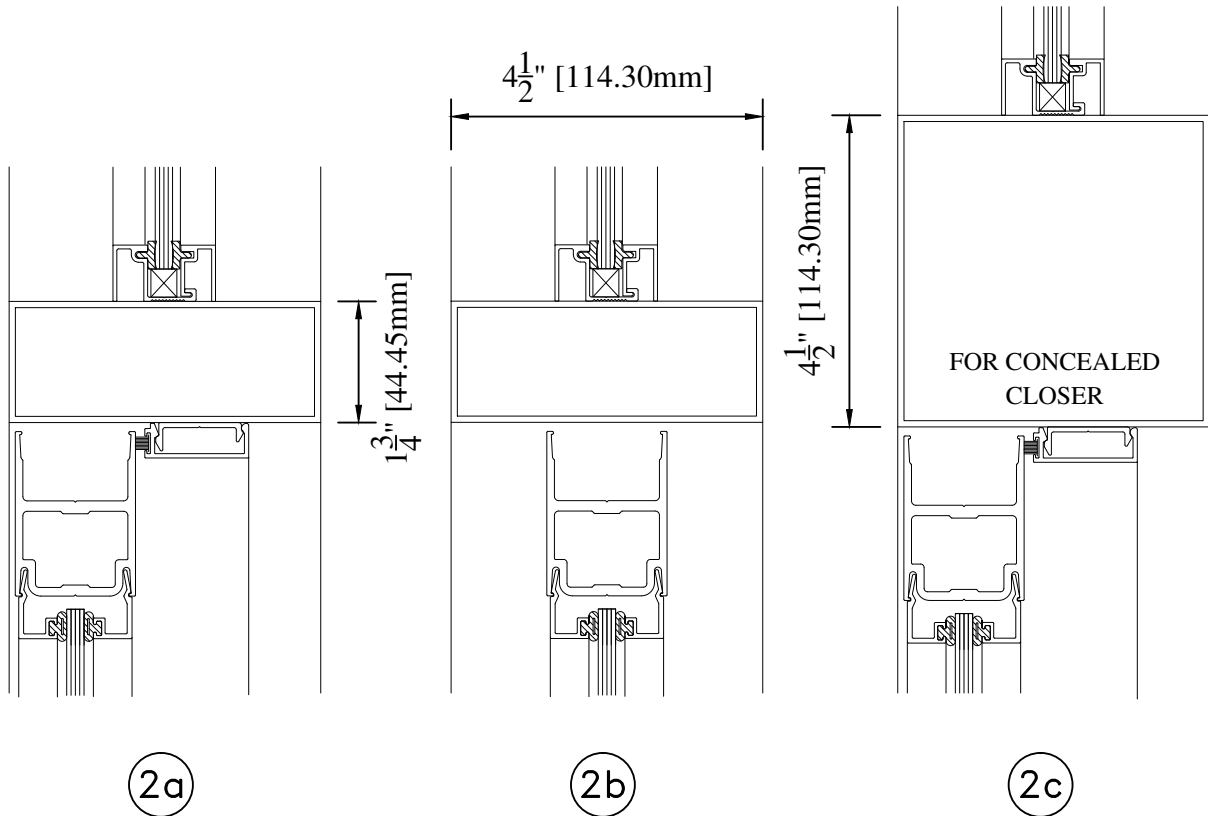
WINDSPEC INC.

MANUFACTURERS OF HIGH PERFORMANCE 'WINDSPEC' WINDOWS
ALUMINUM ENTRANCE SYSTEMS AND ARCHITECTURAL PANELS
1310 CREDITSTONE RD, CONCORD, ONTARIO L4K 5T7
Telephone (905) 738-8311 Fax (905) 738-6188

FEBRUARY 2017

630 SERIES

TYPICAL & DOOR DETAILS

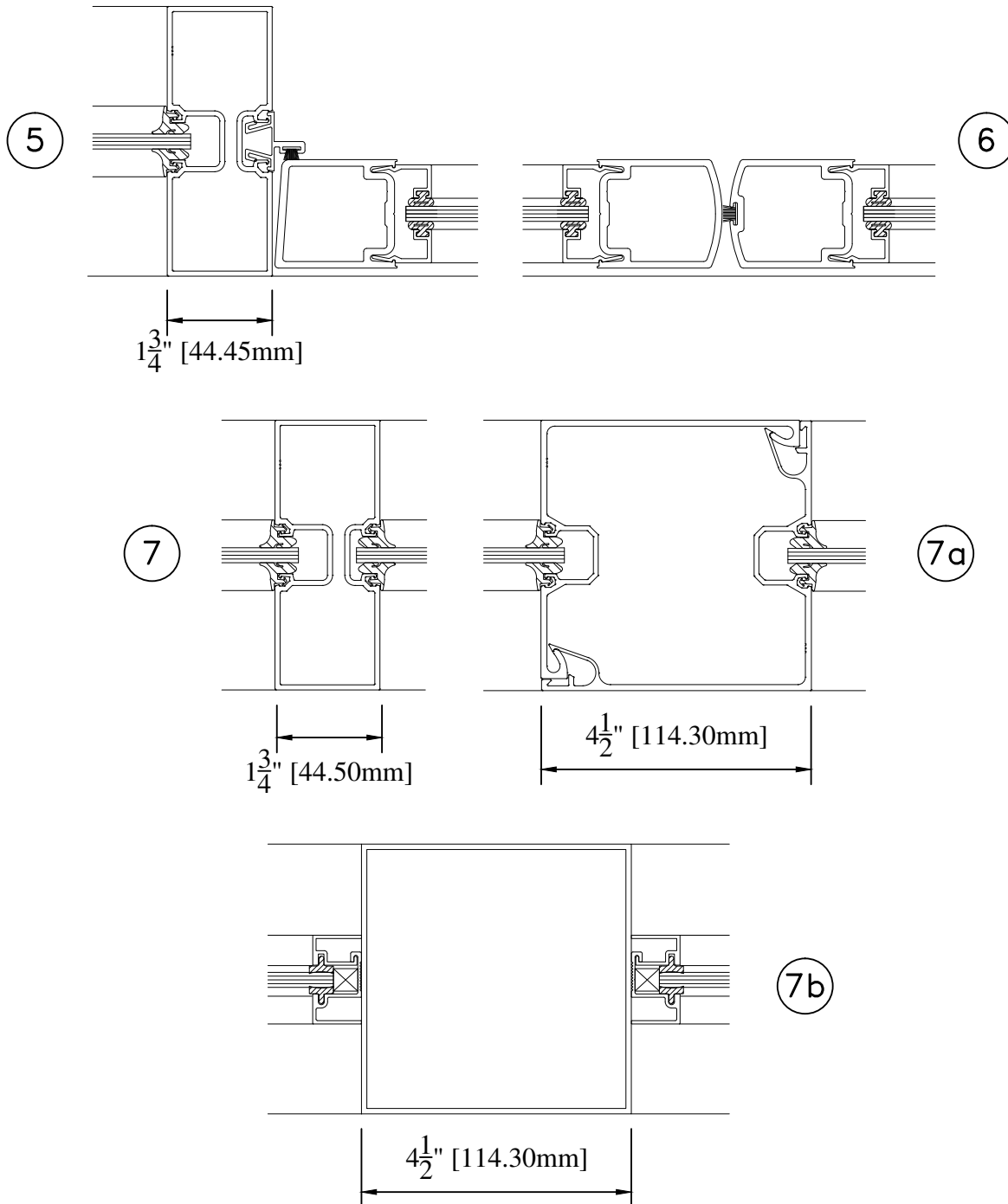


WINDSPEC INC.
MANUFACTURERS OF HIGH PERFORMANCE 'WINDSPEC' WINDOWS
ALUMINUM ENTRANCE SYSTEMS AND ARCHITECTURAL PANELS
1310 CREDITSTONE RD, CONCORD, ONTARIO L4K 5T7
Telephone (905) 738 -8311 Fax (905) 738 - 6188

FEBRUARY 2017

630 SERIES

TYPICAL & DOOR DETAILS



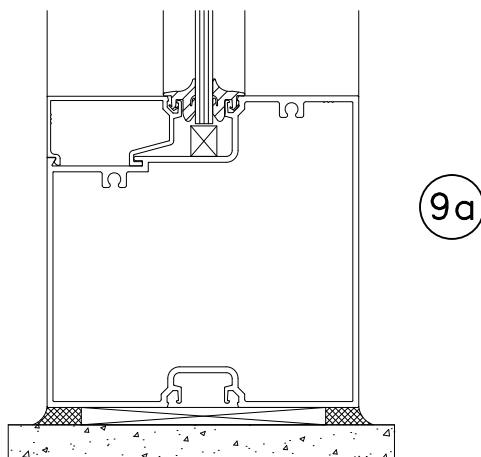
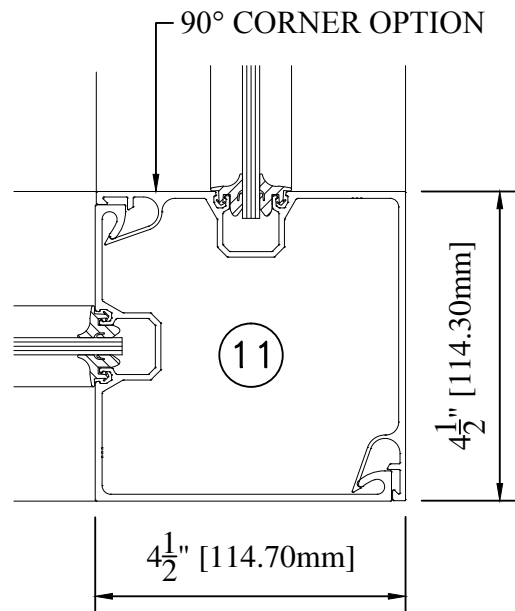
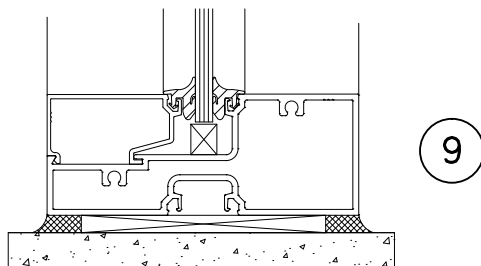
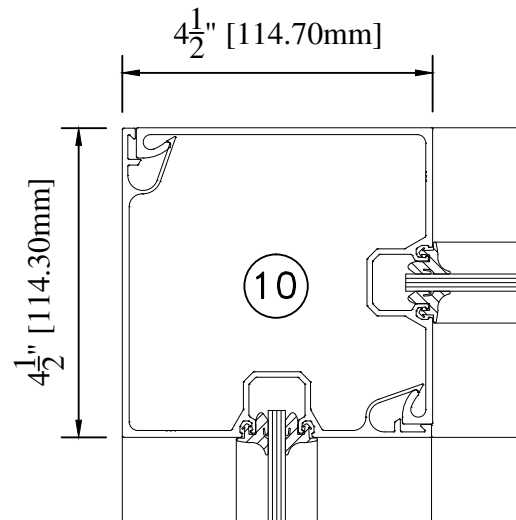
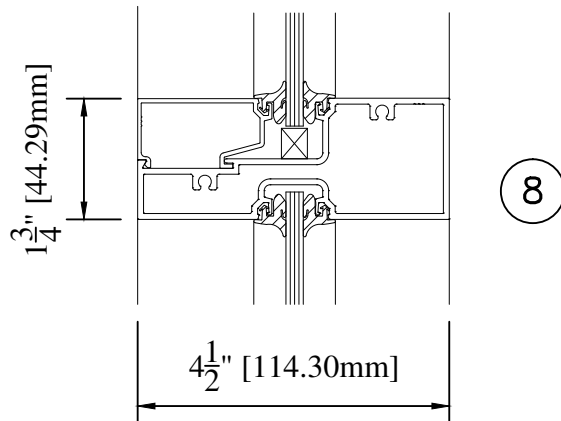
WINDSPEC INC.

MANUFACTURERS OF HIGH PERFORMANCE 'WINDSPEC' WINDOWS
ALUMINUM ENTRANCE SYSTEMS AND ARCHITECTURAL PANELS
1310 CREDITSTONE RD, CONCORD, ONTARIO L4K 5T7
Telephone (905) 738 -8311 Fax (905) 738 - 6188

FEBRUARY 2017

630 SERIES

TYPICAL & DOOR DETAILS

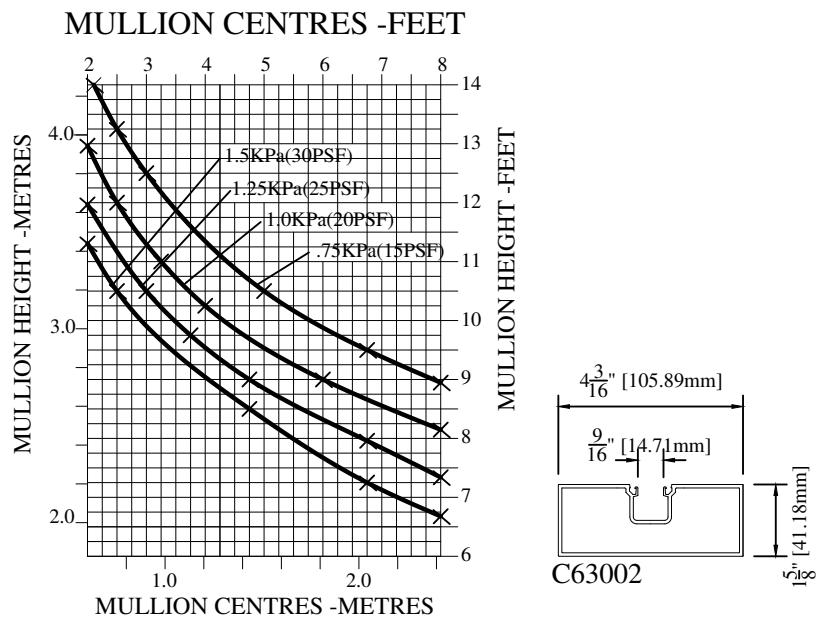
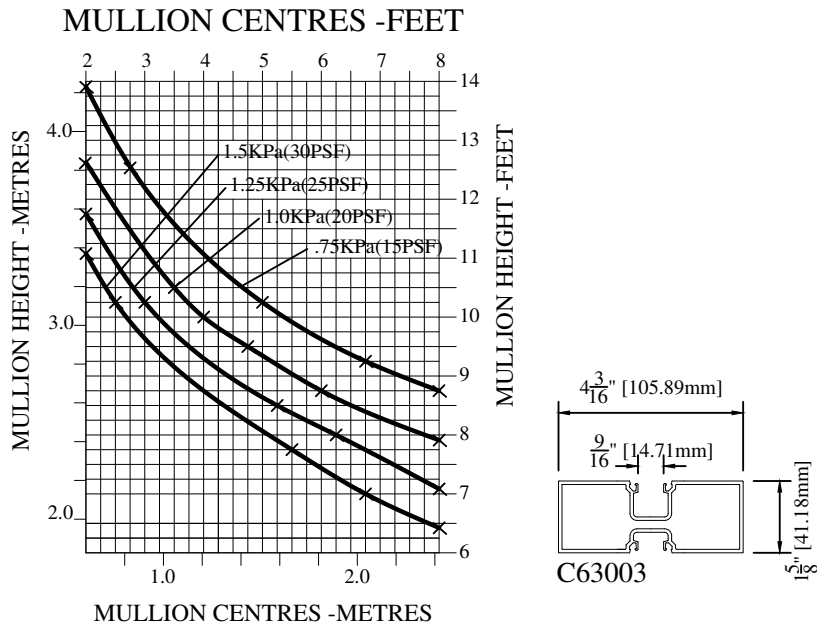


WINDSPEC INC.
MANUFACTURERS OF HIGH PERFORMANCE 'WINDSPEC' WINDOWS
ALUMINUM ENTRANCE SYSTEMS AND ARCHITECTURAL PANELS
1310 CREDITSTONE RD, CONCORD, ONTARIO L4K 5T7
Telephone (905) 738 -8311 Fax (905) 738 - 6188

FEBRUARY 2017

630 SERIES

WIND LOAD CHARTS



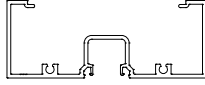
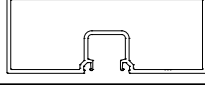
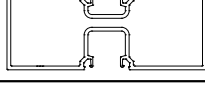
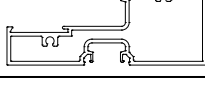
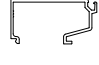
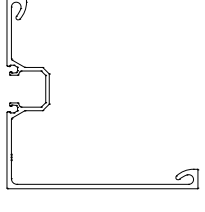
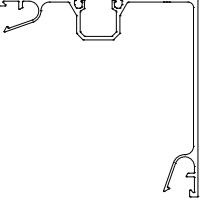
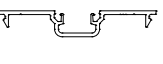
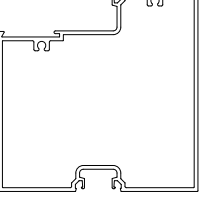
WINDSPEC INC.

MANUFACTURERS OF HIGH PERFORMANCE 'WINDSPEC' WINDOWS
ALUMINUM ENTRANCE SYSTEMS AND ARCHITECTURAL PANELS
1310 CREDITSTONE RD, CONCORD, ONTARIO L4K 5T7
Telephone (905) 738-8311 Fax (905) 738-6188

FEBRUARY 2017

630 SERIES

PARTS LIST

Part Number	Description	Profile
C-63001	1 $\frac{3}{4}$ " x 4 $\frac{1}{2}$ " Open Back Frame	
C-63002	1 $\frac{3}{4}$ " x 4 $\frac{1}{2}$ " Closed Back Frame	
C-63003	1 $\frac{3}{4}$ " x 4 $\frac{1}{2}$ " Double Pocket Mullion	
C63004	1 $\frac{3}{4}$ " x 4 $\frac{1}{2}$ " Horizontal Sill	
C-63005	Square Snap-in Glass Stop	
C-63006	Female Half Corner Mullion	
C-63007	Male Half Corner Mullion	
C-63008	Cover Plate for Open Back Frame	
C-63012	S630 4 $\frac{1}{2}$ " Sill	












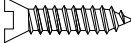


WINDSPEC INC.

MANUFACTURERS OF HIGH PERFORMANCE 'WINDSPEC' WINDOWS
ALUMINUM ENTRANCE SYSTEMS AND ARCHITECTURAL PANELS
1310 CREDITSTONE RD, CONCORD, ONTARIO L4K 5T7
Telephone (905) 738 -8311 Fax (905) 738 - 6188

FEBRUARY 2017

630 SERIES

PARTS LIST

Part Number	Description	Profile
C-40015	Saddle Stop (Front) for $\frac{1}{4}$ " & 1" Units	
C-40016	Saddle Stop Base for Single Glass ($\frac{1}{4}$ ")	
C-63009	Blade Door Stop	
C-63010	Flush Surface Pocket Filler	
H-63001/ C-63033	Sill Shear Block	
H-63002/ C-63032	Mullion Shear Block	
R-65002-R	Glazing Spline for $\frac{1}{4}$ " Glass	
R-65004	Glazing Spline for $\frac{3}{8}$ " Glass	
R-60187	Weatherstrip	
H-63004	#10 x $\frac{1}{2}$ " Fabrication Screw Steel	
H-63005	#10 x $\frac{1}{2}$ " Sabrication Screw S.S.	
H-63006	#12 x 2" Assembly Screw Steel	



WINDSPEC INC.

MANUFACTURERS OF HIGH PERFORMANCE 'WINDSPEC' WINDOWS
ALUMINUM ENTRANCE SYSTEMS AND ARCHITECTURAL PANELS
1310 CREDITSTONE RD, CONCORD, ONTARIO L4K 5T7
Telephone (905) 738 -8311 Fax (905) 738 - 6188

FEBRUARY 2017