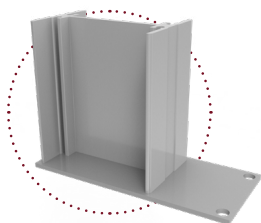


5400 HTP

HIGH THERMAL PERFORMANCE CURTAIN WALL

FEATURES

- 2" wide profile
- Glass reinforced thermal break allows for exceptionally high thermal performance without affecting the structural integrity of the system
- Mullion depths available: 2-3/4", 4", 5"
- Accommodates 1/4", 1" and 1 3/4" glazing thickness
- Other glazing thicknesses available upon request
- Overall system depth to be 2-1/4" deeper than mullion depth for double glazed and 3" for triple glazed
- Capped glazing and SSG configurations available
- Pressure equalized internal drainage (applies to capped mullions only)
- Multiple anchoring methods available including 'F' and 'T' sleeve anchors
- Optional integrated trim system



Sleeve anchors available for quick installation while allowing for deflection.

BENEFITS

The 5400 HTP curtain wall provides exceptional thermal performance that goes beyond current building codes.

As a stick build system, the ease of fabrication and installation make this an ideal choice for both small and large size projects.

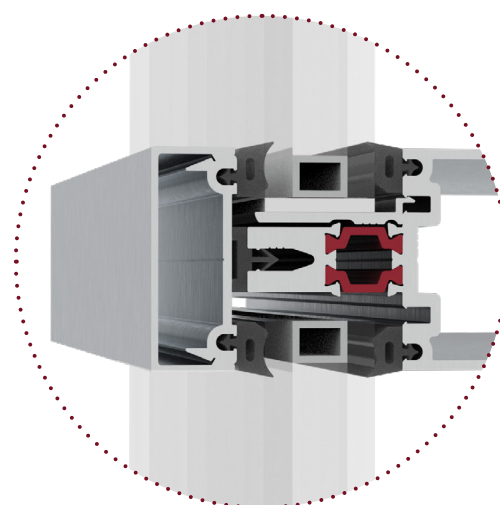
COMPATIBILITY

Compatible with all Windspec Doors:

- HTP doors (high thermal performance)
- Standard Commercial doors
- Exposed and Flush door adapters available

Compatible with most Windspec operable windows:

- 535 projecting vents (Awning, Hopper, Casement)
- 575 frameless projecting vents (Awning, Casement)
- 720 side slider
- 740 single and double hung
- 3-1/4" louver system
- 2-1/4" bypass louver system



ADAPT / INNOVATE / DELIVER

MATERIALS

- All aluminum to be 6063-T6 tempered
- Thermal Break polyamide 6.6, 25% glass fiber reinforced
- Gaskets to be silicone or EPDM
- EPDM corner plugs
- Stainless steel fasteners for pressure plates

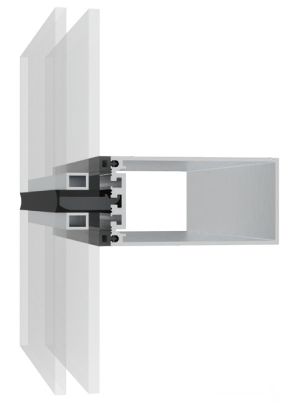
FINISHES

- 2 Color options available (interior/exterior)
- Clear Anodized .0004
- Clear Anodized .0007
- #40 Bronze Anodized .0007
- #26 Light Bronze Anodized .0007
- Champagne Anodized .0007
- Black Anodized .0007
- Acid Etch Anodizing process
- Painted finished available:
Duracron (one-coat)
Duranar (2 coat)
Duranar XL (3 coat)
- Powder coating available
- Wood grain finishes available (Decoral USA)

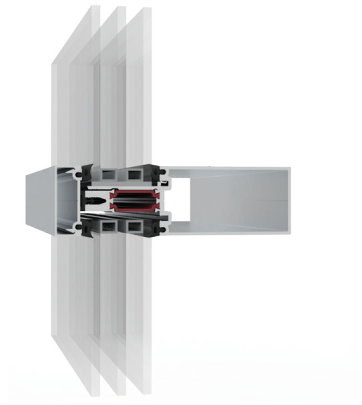
Double Glazed Capped



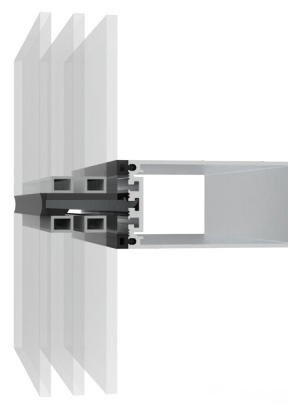
Double Glazed SSG



Triple Glazed Capped



Triple Glazed SSG



Key Performance Figures

PROPERTY	STANDARD ALLOWANCE	RESULT	DESIGNATION
Air Infiltration @ 300 Pa	Fixed Level: <0.2 L/s m2	Pass	FW-AW (fixed)
Air exfiltration @ 300 Pa	Fixed Level: <0.2 L/s m2	Pass	FW-AW (fixed)
Static Water Penetration	No Leakage @ 730 Pa	Pass	FW-AW 100
Structural Design	No permanent damage @ 5040 Pa	Pass	FW-AW 100
Forced Entry	Remove all exterior fasteners using common tools within 5 min. period	Pass	Grade 40

Applicable Standards

- NAFS-AAMA/WDMA/CSA 101/I.S.2/A440-08
- NAFS-AAMA/WDMA/CSA 101/I.S.2/A440-09 Canadian Supplement Section 5
- Air leakage: ASTM E283
- Water penetration: ASTM E331
- Structural performance: ASTM E330
- Wind load calculations: CAN3-S157