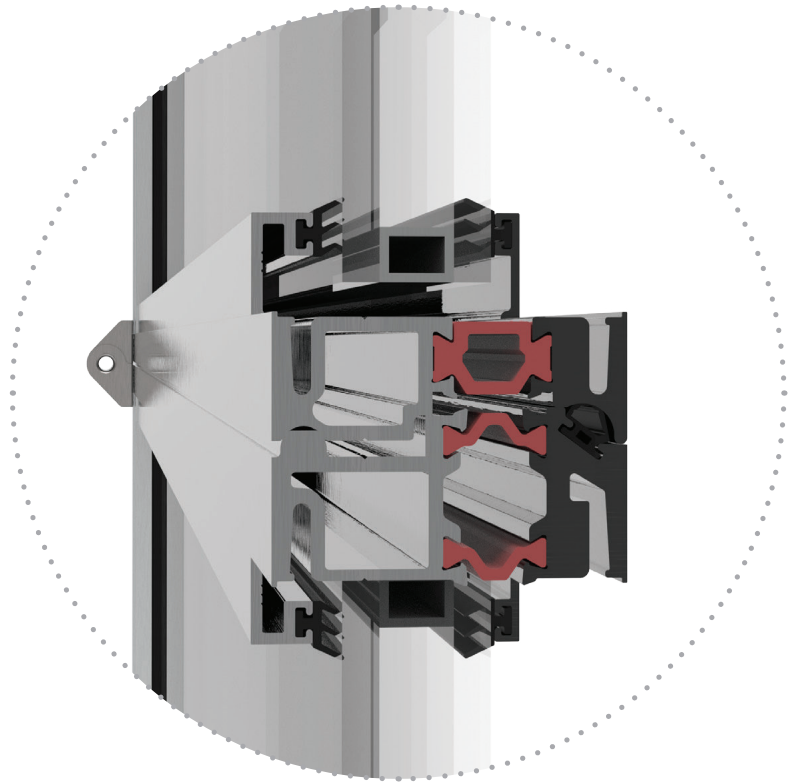


# WINDLYFT HTP

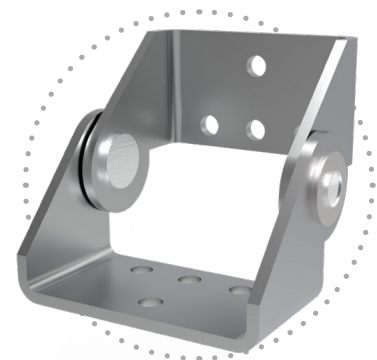
## HIGH THERMAL PERFORMANCE CUSTOMIZABLE ARCHITECTURAL ALUMINUM GLASS GARAGE DOORS

### FEATURES

- Crafted with reinforced, heavy-gauge architectural aluminum for unmatched strength and high thermal performance
- WindLyft HTP garage doors contain an industry first glass-reinforced nylon thermal barrier
- Architectural aluminum construction: a robust 2-inch deep aluminum frame ensures long-lasting, low-maintenance performance with a modern look
- Streamlined appearance: sleek 3-inch sightlines offer a contemporary design while maximizing visibility
- Weather-resistant seals: precision-engineered section joints prevent air and water infiltration, ensuring reliable performance in any climate
- Reinforced durability: enhanced structural reinforcements deliver added strength, particularly for larger double-door models
- Additional reduction of exterior noise
- Color matching hardware available
- Single or sealed units glazing available
- Endless color and glass options



WindLyft Custom  
Color Match Hinges



ADAPT / INNOVATE / DELIVER

## MATERIALS

- All aluminum to be 6063-T6 tempered
- Interior/exterior glazing gaskets: extruded EPDM – 60 durometer
- Thermal Break polyamide 6.6, 25% glass fiber reinforced

## FINISHES

- 2 Color options available (interior/exterior)
- Clear Anodized .0004
- Clear Anodized .0007
- #40 Bronze Anodized .0007
- #26 Light Bronze Anodized .0007
- Champagne Anodized .0007
- Black Anodized .0007
- Acid Etch Anodizing process
- Painted finished available: Duracron (one-coat), Duranar (2 coat), Duranar XL (3 coat)
- Powder coating available
- Wood grain finishes available (Decoral USA)

