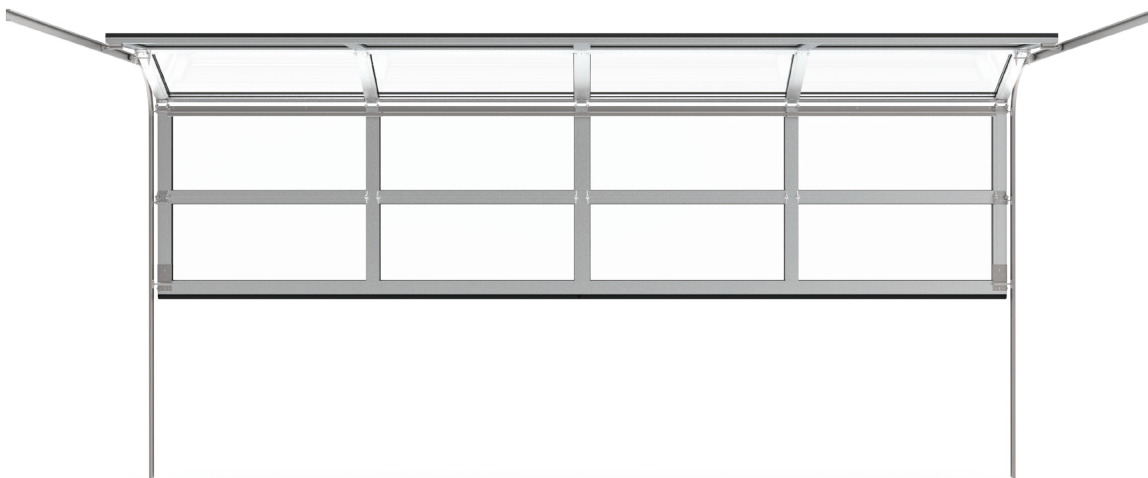
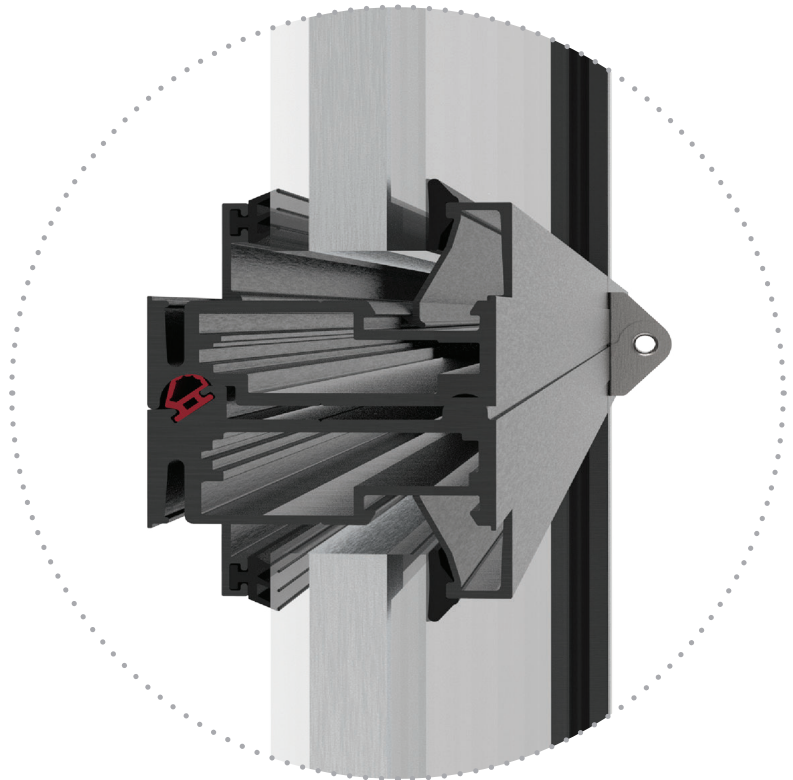


WINDLYFT S

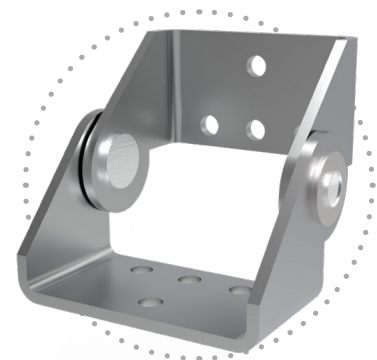
CUSTOMIZABLE ARCHITECTURAL ALUMINUM GLASS GARAGE DOORS

FEATURES

- Architectural aluminum construction: a robust 2-inch deep aluminum frame ensures long-lasting, low-maintenance performance with a modern look.
- Streamlined appearance: sleek 3-inch sightlines offer a contemporary design while maximizing visibility.
- Weather-resistant seals: precision-engineered section joints prevent air and water infiltration, ensuring reliable performance in any climate.
- Reinforced durability: enhanced structural reinforcements deliver added strength, particularly for larger double-door models.
- Additional reduction of exterior noise.
- Color matching hardware available.
- Single or sealed units glazing available
- Endless color and glass options.



WindLyft Custom
Color Match Hinges



ADAPT / INNOVATE / DELIVER

MATERIALS

- All aluminum to be 6063-T6 tempered
- Interior/exterior glazing gaskets:
extruded EPDM – 60 durometer

FINISHES

- 2 Color options available
(interior/exterior)
- Clear Anodized .0004
- Clear Anodized .0007
- #40 Bronze Anodized .0007
- #26 Light Bronze Anodized .0007
- Champagne Anodized .0007
- Black Anodized .0007
- Acid Etch Anodizing process
- Painted finished available:
Duracron (one-coat)
Duranar (2 coat)
Duranar XL (3 coat)
- Powder coating available
- Wood grain finishes available
(Decoral USA)

